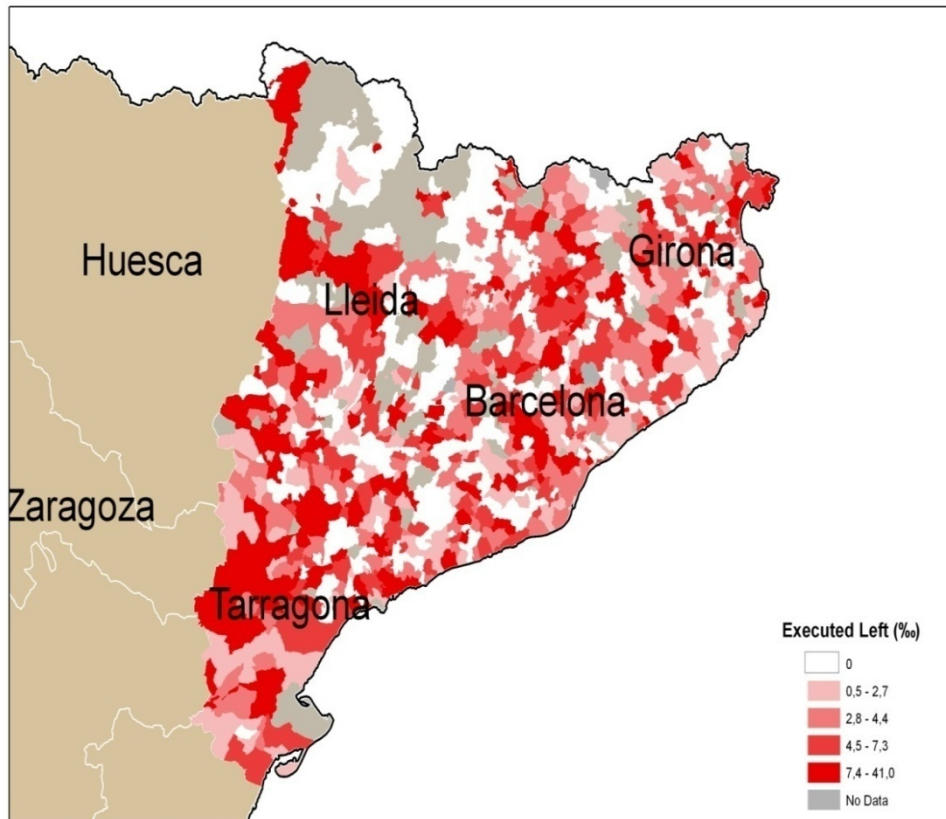


Balcells, Laia. 2011. "Continuation of politics by two means: direct and indirect violence in civil war" *Journal of Conflict Resolution* 55(3): 397-422.

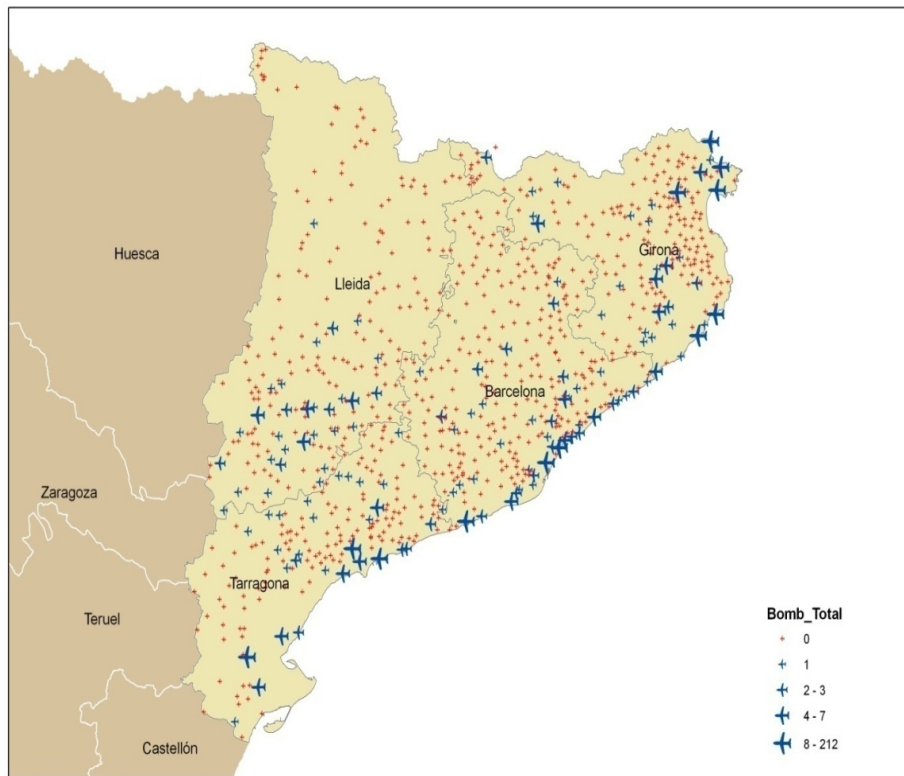
Online Appendix

Tables, Figures, and Maps

Map A1. Executed by the Left in Catalonia



Map A2. Bombings by the Right in Catalonia



Map A3. Executed by the Right in Nationalist Aragon

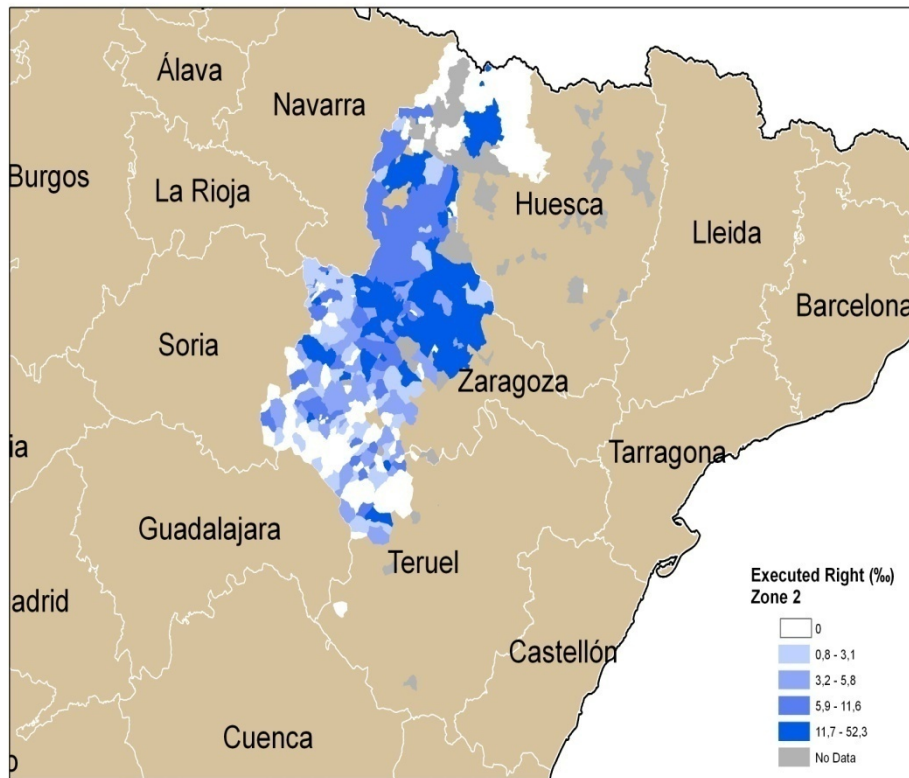


Table A1. Dependent and Independent Variables in the Models (Catalonia)

Name of the Variable	Description	Data Sources
Executed Left	Total number of people executed by the left in a locality	Solé i Sabaté and Villarroya (1989)
Support Left	% Support for the Popular Front in the 1936 General elections	Vilanova (2005)
Support Right	% Support for the Order Front in the 1936 General elections	Vilanova (2005)
Bombings	1 if locality received a lethal bombing by the Nationalists that killed at least 1 person, 0 if not	Solé i Sabaté (1986)
Bombkilled10	1 if the locality received a lethal bombing by the Nationalists that killed at least 10 people, 0 if not	Solé i Sabaté (1986)
Competition	Index from 0 (minimum parity) to 1 (maximum parity)	Formula in Chacón et al. (2006)
CNT Affiliation	% Affiliated to the CNT in a locality (over total population)	CNT (1936), Cucó i Giner (1970)
UGT Affiliation	% Affiliated to the UGT in a locality (over total population)	UGT (1931)
Population	Inhabitants of the municipality in 1936	<i>INE</i>
Catholic center	Dummy variable, 1 if the municipality had an archbishop in 1936; 0 otherwise	<i>CEE</i>
Frontline	Dummy variable, 1 if the municipality is in a county that shares the military frontline at any time during the war, 0 if not	Solé i Sabaté and Villarroya (2005)
Border	Dummy variable, 1 if the municipality is in a county that shares the French border, 0 if not	<i>ICC</i>
Sea	Dummy variable, 1 if the municipality is in a county with seashore, 0 if not	<i>ICC</i>
Altitude	Altitude of the municipality, in meters	<i>ICC</i>
Latitude	Degrees (UTM, fus 31, datum ED50)	<i>ICC</i>
Longitude	Degrees (UTM, fus 31, datum ED50)	<i>ICC</i>

Table A2. Dependent and Independent Variables in the Models (Aragon)

Name of the Variable	Description	Data Sources
Executed Right	Total number of people executed by the right in a locality	Casanova et al. (2001)
Competition	Index from 0 (minimum parity) to 1 (maximum parity)	Formula in Chacón et al. (2006)
Support Left	% support for the Popular Front in the 1936 general elections	Calculated from Germán Zubero(1982)
CNT Affiliation	% affiliated to the CNT in a locality (over total population)	CNT (1936), Cucó i Giner (1970)
UGT Affiliation	% affiliated to the UGT in a locality (over total population)	UGT (1931)
Population	Inhabitants of the municipality in 1936	INE
Catholic center	Dummy variable, 1 if the municipality had an archbishop in 1936; 0 otherwise	CEE
Longitude	Degrees	Global Gazetteer 2.1
Latitude	Degrees	Global Gazetteer 2.1
Altitude	Altitude of the municipality, in feet	Global Gazetteer 2.1
Previous Conflict	1 if violent events in the prewar period, 0 if not	Calculated from Casanova (1985)

Table A3. Executed by the Left in Catalonia. NB Models

	M1 NB: Number of executed	M3 NB: Number of executed
Competition	1.302*** (0.34)	-----
Support Left	-----	0.00021 (0.0049)
Frontline	0.264* (0.15)	0.272* (0.152)
Population (*1000)	0.080 (0.12)	0.081 (0.12)
CNT Affiliation	0.122* (0.06)	0.126** (0.062)
UGT Affiliation	0.101 (0.09)	0.113 (0.092)
Border	-0.390** (0.16)	-0.448** (0.18)
Sea	-0.339** (0.14)	-0.374** (0.14)
Altitude (meter*1000)	-1.236*** (0.41)	-1.335*** (0.39)
Catholic Center	2.165*** (0.83)	2.226*** (0.86)
Constant	0.497 (0.44)	1.706*** (0.29)
Ln α	0.651*** (0.10)	0.671*** (0.09)
Observations	870	870
Chi2	284.06	243.14

Standard Errors in Brackets
*Sig Level: *.1, **.05, ***.001*

Table A4. Executed by the Right in Nationalist Aragon. NB Models

	M1	M2	M3	M4
Competition	1.694***	1.624***	-----	-----
	(0.48)	(0.47)		
Population (*1000)	0.094	0.037	0.108	0.044
	(0.21)	(0.13)	(0.20)	(0.16)
CNT Affiliation	0.016	-0.053	0.003	-0.071
	(0.07)	(0.06)	(0.07)	(0.05)
UGT Affiliation	0.116**	0.092***	0.093***	0.077***
	(0.05)	(0.03)	(0.03)	(0.03)
Latitude	-0.554*	-0.647*	-0.419	-0.496
	(0.30)	(0.33)	(0.32)	(0.36)
Longitude	0.522	0.461	0.443	0.351
	(0.41)	(0.44)	(0.42)	(0.44)
Altitude (feet*1000)	-0.872***	-0.885***	-0.863***	-0.871***
	(0.21)	(0.21)	(0.21)	(0.22)
Catholic Center	2.911***	2.325***	2.928***	2.347***
	(1.10)	(0.83)	(1.10)	(0.85)
Previous Violence	-----	1.287**	-----	1.334**
		(0.51)		(0.64)
Supp Left	-----	-----	0.023***	0.022***
			(0.01)	(0.01)
Constant	25.720**	29.626**	20.495	23.688
	(12.86)	(14.09)	(13.75)	(15.34)
Lnα	0.739***	0.665***	0.774***	0.699***
	(0.13)	(0.13)	(0.14)	(0.14)
Observations	251	251	251	251
Chi2	140.058	176.454	125.699	167.692

Standard Errors in Brackets
*Sig Level: *.1, **.05, ***.001*

Table A5. Logit on Lethal Bombing (at least 10 deaths)

	M1	M2	M3
Population (*1000)	0.329 (0.26)	0.365 (0.28)	0.365 (0.28)
CNT Affiliation	0.042 (0.03)	0.043 (0.03)	0.044 (0.03)
UGT Affiliation	0.284*** (0.10)	0.305*** (0.10)	0.306*** (0.10)
Catholic Center	2.642* (1.60)	1.843 (1.59)	1.835 (1.60)
Longitude (*1000)	0.001 (0.00)	-0.000 (0.00)	-0.000 (0.00)
Latitude (*1000)	-0.003 (0.01)	-0.000 (0.01)	-0.000 (0.01)
Altitude (meter*1000)	-0.967 (0.80)	-1.555* (0.89)	-1.543* (0.88)
Support Right 1936	-0.036*** (0.01)	-----	-----
Competition	-----	-0.464 (1.11)	-----
Competition (Abs)	-----	-----	-0.668 (0.87)
Constant	11.956 (28.23)	-1.967 (28.41)	-1.683 (28.22)
Observations	870	870	870
Chi2	55.665	52.935	52.405
Aic	263.521	270.484	270.143

*Robust standard errors in brackets.
Sig Level: *.1 **.05 ***.001*

Table A6. Executed Left in Republican Aragon. NB Models

	M1	M2	M3	M4
Competition	-0.413 (0.29)	-0.423 (0.29)	-----	-----
Population (*1000)	0.743*** (0.11)	0.747*** (0.11)	0.738*** (0.11)	0.743*** (0.11)
CNT Affiliation	0.021* (0.01)	0.022* (0.01)	0.026** (0.01)	0.026** (0.01)
UGT Affiliation	-0.088 (0.06)	-0.090 (0.06)	-0.036 (0.04)	-0.037 (0.04)
Latitude	-0.179 (0.14)	-0.176 (0.14)	-0.180 (0.13)	-0.176 (0.13)
Longitude	0.378** (0.17)	0.371** (0.17)	0.416** (0.17)	0.408** (0.17)
Altitude (feet*1000)	-0.119** (0.06)	-0.121** (0.06)	-0.136** (0.06)	-0.138** (0.06)
Catholic Center	-1.668* (0.86)	-1.695** (0.86)	-1.697** (0.85)	-1.730** (0.85)
PreviousViolence	-----	-0.140 (0.35)	-----	-0.183 (0.35)
Support Left	-----	-----	-0.016*** (0.00)	-0.016*** (0.00)
Constant	8.932 (5.79)	8.807 (5.81)	9.156 (5.68)	9.009 (5.70)
Ln α	0.267*** (0.10)	0.266*** (0.10)	0.233** (0.10)	0.233** (0.10)
Observations	395	395	395	395
Chi2	138.633	138.554	180.567	180.990

Standard Errors in Brackets
Sig Level: *.1, **.05, ***.001

Descriptive Statistics

Table A7. Catalonia Dataset

Variable	Obs.	Mean	Std. Dev.	Min	Max
Population	1058	1647.56	19726.11	50	637841
Executed Left	1062	7.54	73.65	0	2328
Support Left	1058	52.27	16.94	2.2	100
Support Right	1058	47.72	16.94	9	97.8
Competition	1058	0.88	0.16	0	1
CNT Affiliation	1062	0.98	4.49	0	49.61
UGT Affiliation	1058	0.088	1.023	0	20.36
Frontline	1060	0.21	0.40	0	1
Border	1060	0.22	0.41	0	1
Sea	1060	0.28	0.45	0	1
Altitude (Meters)	875	368.22	317.3	0	1539
Catholic center	1062	0.008	0.0865	0	1
Bombings	1062	0.13	0.34	0	1
Longitude	1061	327.35	162.46	0	522.85
Latitude	1061	3811.334	1758.56	0	4745.55
BombKilled10	1062	0.045	0.208	0	1

Table A8. Aragon Dataset

Variable	Obs.	Mean	Std. Dev.	Min	Max
Executed Right	366	16.49	186.16	0	3543
Support Left	255	27.33	17.46	0.25	81.92
Competition	255	0.67	0.28	0.009	0.99
Population	361	1446.96	8583.18	139	162121
CNT Affiliation	361	0.49	2.22	0	26.02
UGT Affiliation	361	0.27	1.61	0	13.23
Latitude	359	41.76	0.58	40.47	42.77
Longitude	359	-1.21	0.46	-2.15	0.15
Altitude (Feet)	359	2404.56	988.37	567	6676
Catholic Center	366	0.008	0.09	0	1
Previous Violence	366	0.052	0.22	0	1

Table A9. Catalonia and Aragon Dataset

Variable	Obs.	Mean	Std. Dev.	Min	Max
Executed	2010	11.62	103.9	0	3567
Population	1996	1399.69	14833.55	50	637841
Zone Rep.	2010	.82	.39	0	1
CNT Affiliation	2000	.62	3.46	0	77.22
UGT Affiliation	2000	.11	1.05	0	20.36
Catholic Center	2010	.007	.08	0	1
Border	2008	.18	.38	0	1
Sea	2008	.15	.35	0	1
Competition	1716	.81	.23	0	1
Compabs	1716	.64	.25	0	1
Support Left	1716	42.74	20.75	.25	100

References (Online Appendix)

CNT. *El Congreso Confederal de Zaragoza*. [General Confederal Congress of Zaragoza]. Mayo 1936.

Conferencia Episcopal Española (CEE) [Spanish Episcopal Conference]:
<http://www.conferenciaepiscopal.es>

Cucó Giner, Antonio. 1970. “Contribución a un estudio cuantitativo de la C.N.T.” [Contribution to a Quantitative Study of the CNT]. *Saitabi*: 181–202.

Germán Zubero, Luis Gonzalo. 1982. “Elecciones y partidos políticos en Aragón durante la Segunda República: estructura económica y comportamiento político” [Elections and political parties in Aragon during the Second Republic: economic structure and political behavior]. PhD Dissertation. Departamento de Historia Moderna y Contemporánea, Universidad de Zaragoza, Zaragoza.

Global GanzeeterVersion 2.1: <http://www.fallingrain.com/world>

Infraestructura de Datos Espaciales de España (IDEE) [Infrastructure of Spatial Data of Spain]: www.idee.es

Instituto Nacional de Estadística (INE) [Spanish National Statistics Institute]:
www.ine.es

Institut Cartogràfic de Catalunya (ICC) [Cartographic Institute of Catalonia]:
<http://www.icc.cat>

UGT. *Boletín de la Unión General de Trabajadores de España* [Bulletin of Workers's General Union of Spain]. Noviembre 1931. Año III. Num. 35.

UGT. *Boletín de la Unión General de Trabajadores de España* [Bulletin of Workers's General Union of Spain]. Diciembre 1931. Año III. Num. 36.

Vilanova, Mercè. 2005. *Atlas Electoral de la Segona República a Catalunya* [Electoral Atlas of the Second Republic in Catalonia]. Barcelona: Enciclopèdia Catalana.